

# ZANUSSI

使用本產品前請詳細閱操作手冊。  
請妥善保管本操作手冊，以供未來備查之用。

## 洗衣機

### 操作手冊

**ZPS6016**

**ZPS7016**

**ZPS6E**

**ZPS7E**

### 閱讀手冊

其中發現許多有用的指示，如何正確使用及保養洗衣機。在洗衣機壽命期間需要有一點預防保養，便能節省許多時間及費用。一些常見的問題在故障排除的圖表上可找到。有問題如果先檢查故障排除圖表，可能不需要找人服務

目錄	頁次
安全注意事項	1
安裝說明	2
產品零件介紹	4
操作說明	5
保養指引	10
疑難排解	12
規格	13
保修	14

## 安全注意事項

1. 為避免觸電、火災或人身傷害，請在使用本機前徹底仔細閱讀本說明書，並保留供日後參考。
2. 本機僅供家庭使用。請使用適合的電源(220-240V~/50Hz)。
3. 請勿浸放本機於水或其他液體。
4. 請勿在陽光直接照射下使用本機。
5. 不使用本機時，請關機，否則可能導致危險。
6. 使用者離開本機時，必須關機並拔掉插頭，否則可能導致危險。
7. 請保持兒童遠離本機。
8. 除非在負責其安全之人員的監督或有關如何使用本機的指導下，本機不可由生理、感覺或精神能力不足、或缺乏經驗與知識之人士(包括兒童)使用。
9. 請照顧好兒童，確保他們不以本機為遊戲工具。
10. 如果本機出現任何損壞或故障跡象，為避免危險，請立即停止使用，並聯繫經本公司授權的服務中心檢查修理，切勿自行維修或更改任何部件。
11. 如果電源線損壞，為免發生意外，必須由製造商、其服務代理或類似合格人員更換。
12. 清潔或保修本機前，必須先關機並拔掉插頭。
13. 用乾布清潔本機表面。不要使用腐蝕性清潔劑或溶劑進行清潔。不要用水沖洗本機。
14. 不使用時，必須關機並拔掉插頭。拔出插頭前，確保已先關機，並且不要用手拉拔電源線。
15. 長期不使用本機時，必須先關機，拔掉插頭，包好本機，並存放於乾燥涼爽處。
16. 本機四周嚴禁擺放易燃和爆炸物體，也不可在充滿可燃氣體和粉末的環境中使用本機。保持任何火源和熱源遠離本機。
17. 使用本機所附的新軟管組件，不得使用舊的軟管組件。
18. 本機僅供室內使用。
19. 未經授權，切勿拆卸和組裝本機。
20. 滾筒完全停止旋轉之前，請勿伸手進入和拿取衣物。
21. 請勿安裝本機在潮濕和有雨的環境，以免發生觸電、火災、故障和變形等意外。
22. 嚴禁洗濯沾有煤油、汽油、酒精和其他易燃質的衣物。
23. 定期清潔電源插頭，移除灰塵髒污，以免接觸不良。
24. 請妥當連接插座接地線，以免意外漏電造成觸電。
25. 請插緊電源頭插。
26. 請勿用濕手拔出或插入插頭，以免觸電。
27. 洗濯衣物前，請確保進水軟管已連接妥當及水龍頭已經打開。
28. 不要連接熱水供應管至本機。
29. 洗衣機上嚴禁兒童站、坐、躺，或放置重物。
30. 請勿在洗衣機中洗濯羽絨服、雨衣、釣魚外套及類似衣物。

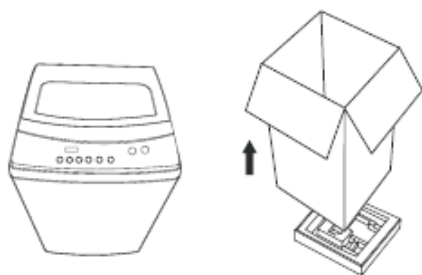
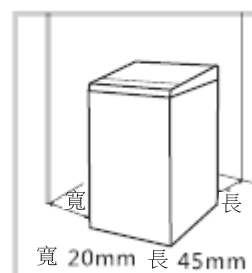
## 安裝說明

### 安裝區域

- 穩定性對於防止產品震動移位十分重要！
- 確保產品不壓在電源線上。
- 保持遠離熱源(如煤炭或天然氣)。

### 拆除包裝

- 拆除包裝，並取出底座泡沫墊。
- 打開洗衣機的蓋，並取出配件。
- 嚴禁在底座泡沫墊上測試操作或洗濯。

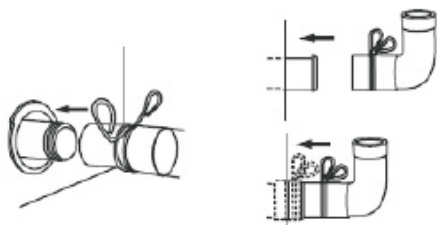


底座泡沫墊

### 排水軟管的安裝

注意：只能使用與新的本機一起供應的新的軟管組。不要使用現有機器的軟管或曾使用的軟管。

- 將排水軟管完全安裝在排水連接器上。
- 用環箍固定並收緊。(如圖所示及您可以使用鉗子完成。)

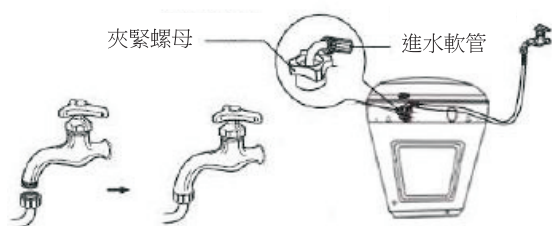


### 進水軟管的安裝

將進水軟管(配有金屬過濾袋)鎖定在到水龍頭上。

將進水軟管的另一端緊緊轉到進水閥上。(水閥內有橡膠密封圈)

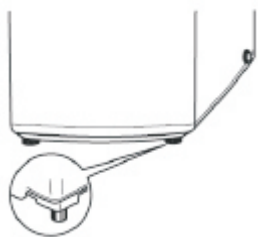
注意：轉緊夾緊螺母時，均勻施加力及不要扭曲進水閥，以免進水閥接頭斷裂。





## 洗衣預備步驟

1. 調整可調腳旋鈕，以使洗衣機穩定放置。



可調腳旋鈕(順時針旋轉時會伸長，逆時針旋轉時會縮短)：先稍微傾斜洗衣機並鬆開可調腳旋鈕。調整可調腳旋鈕，以確保洗衣機的四個角落與地面穩定接觸。然後轉緊可調腳旋鈕來將其鎖定。如果地面明顯不平坦，請修正地面或選擇另一平坦地面放置，否則洗衣機滾筒會傾斜並敲擊機櫃。

2. 安裝進水軟管。



3. 連接電源。

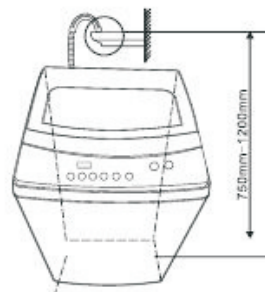


4. 打開水龍頭。



5. 放下排水軟管。

上排水



注意：當排水軟管的高度在 750mm 以下時，水會溢出。

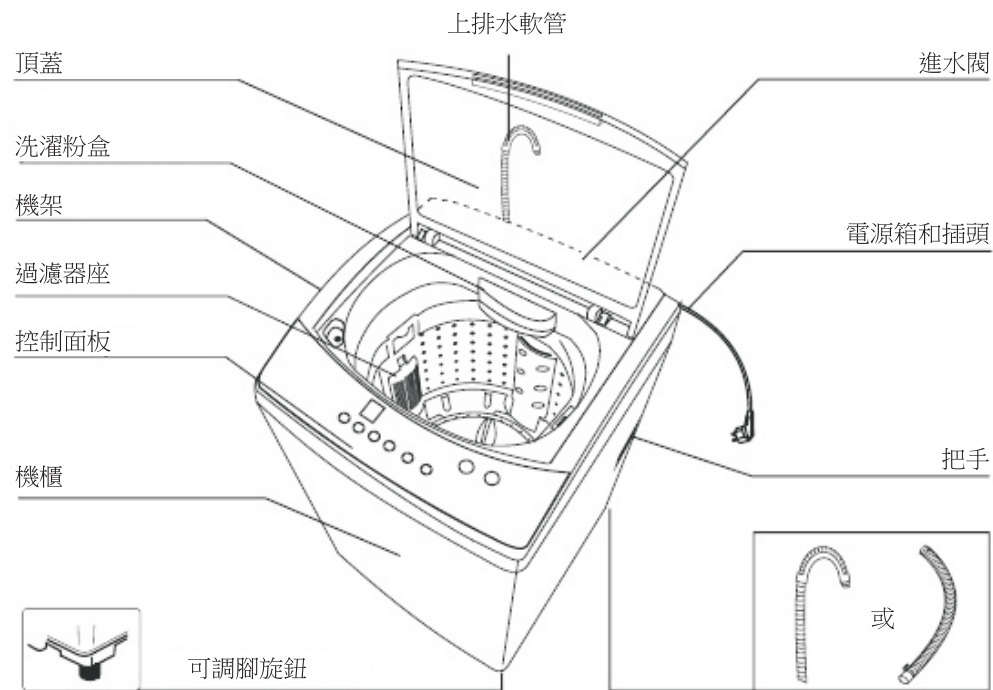
6. 放入衣物和適量洗濯粉。



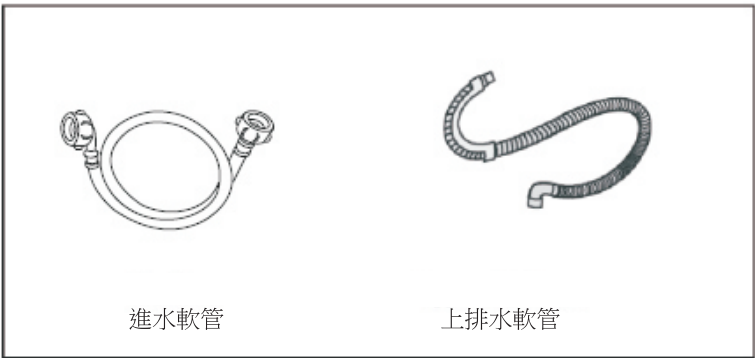
### 注意！

- 注意：使用前請先取出硬幣、鑰匙與其他硬物，並拉上拉鍊，以防止衣物和滾筒受損。

產品零件介紹

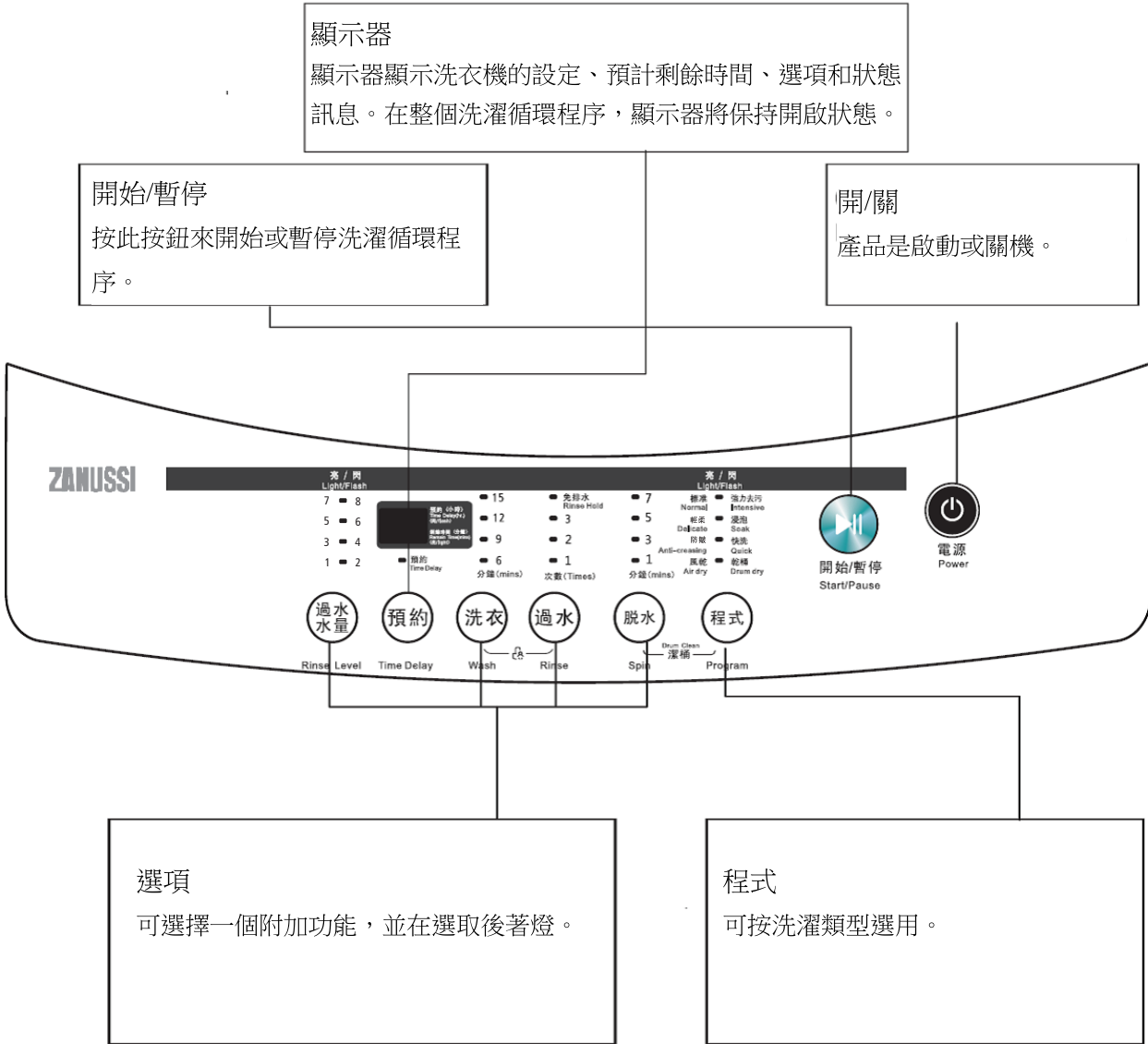


配件

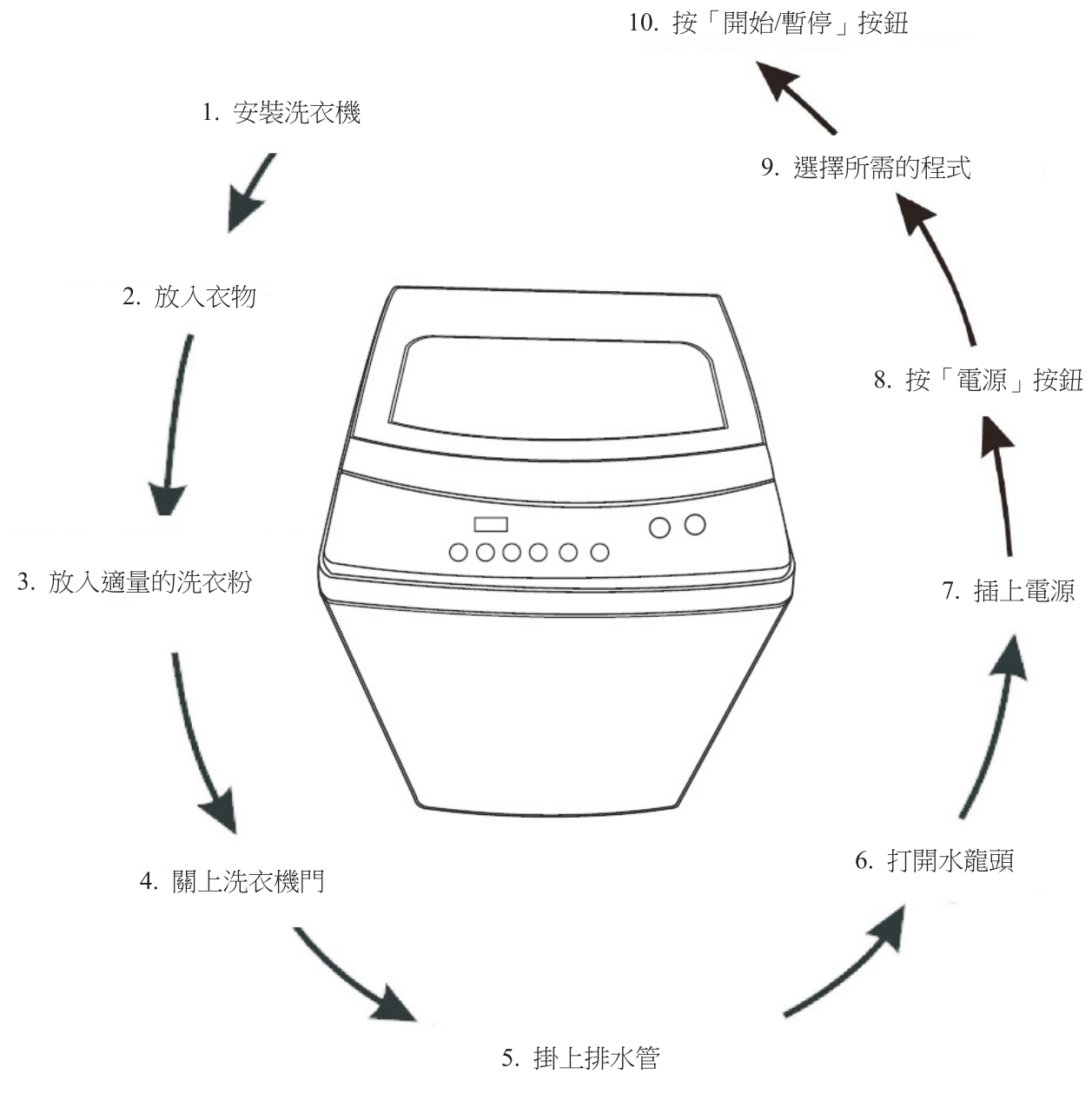


操作說明

控制面板



## 快洗



## 程式選擇

1. 按「電源」按鈕
2. 選擇適當的水位或其他附加功能。
3. 按「開始/暫停」按鈕。

## 洗衣機停止

- 當洗衣機停止時，蜂鳴器會連續鳴叫 6 次，然後電源自動切斷。
- 關閉水龍頭。
- 儘管可以自動切斷電源，但安全起見，必須拔除電源插頭。

## 操作說明

### 單觸智能洗濯

- 打開電源後，按「開始/暫停」按鈕來直接進入「單觸智能洗濯」程式。  
洗衣機將自動執行模糊檢測。將根據衣物量選擇水位和程式。並且水位燈持續閃爍，數位顯示器同時顯示「-」。
- 如果之前按下其他按鈕及有水留在內筒中，單觸智能洗濯功能將被取消。然後程式將直接設定進入有預設水位的正常。

### 正常

- 標準織物洗濯程式，適合洗濯麻棉類織物。

### 纖幼

- 洗濯纖幼衣物。

### 防皺

- 洗濯襯衫和棉質或羊毛衣物，防止衣物纏結和起皺。

### 風乾

- 按「特殊」按鈕來選擇「風乾」程式。該程式可以風乾衣物(不完全乾燥)，並同時乾燥外筒和內筒，這樣可以避免外筒和內筒滋生黴菌。

透過在脫水過程中將自然空氣帶入筒，本過程通過通風去除水分，可以有效率地乾燥衣物。

### 強力

- 洗濯比較髒的衣物。水流比較強。

### 浸泡

- 洗濯能力強，洗濯比較髒的衣物。

### 快

- 在較短時間內洗濯不太髒的衣物。

### 乾筒

- 洗濯後運行乾筒程式，可以清除滾筒兩側的大部分水分，並最小化黴菌滋長的可能性。請至少每星期運行一次。
- 乾筒程式運行時，不要將任何衣物或洗濯粉放入洗衣機。
- 如果滾筒上滋生黴菌，請立即運行潔筒程式。

### 潔筒

- 使用一定時間後，洗濯粉末殘留物將粘附在滾筒內部和外部。請定期清潔。否則，粘附的殘留物將在洗濯過程中脫落，並使衣物變髒。建議至少每月潔筒一次。

### 注意：

- 請不要連續啟動該程式。
- 您應該放入少量氯漂白劑來提高潔筒效果。
- 本程式目的為清潔滾筒。不要放進衣物。

### 免排水

- 最後過水後，洗衣機將不脫水，使用者可以取出衣物，然後用過水的水洗濯其他衣物。

### 兒童鎖

- 避免兒童誤操作。

## 選項



Rinse Level

### 過水水位

根據衣物類別、髒污程度和客戶的洗濯習慣，選擇水位



Wash



Rinse



Spin

### 功能

可以選擇洗濯時間、過水次數、脫水時間及其他設定



Time Delay

### 預約時間

設定預約功能：

1. 選擇一個程式
2. 按預約按鈕來選擇時間(預約時間為 0-24 小時)
3. 按[開始/暫停]來開始預約操作



電源  
Power



Program



Time Delay



開始/暫停  
Start/Pause

取消預約功能：

按下[預約]按鈕直到顯示為 0H(0 小時)。在啟動該程式之前應該按下它。如果該程式已經重新開始，應該按[開/關]按鈕來重置該程式。

## ！ 注意！

- 如果機器運作時電源出現任何故障，一個專用記憶體將儲存所選程式，並且當重新啟動電源時，該程式將在按[開始/暫停]按鈕後繼續。

### 潔筒



電源  
Power



Spin

Drum Clean  
潔桶



Program



開始/暫停  
Start/Pause

### 兒童鎖

避免兒童誤操作。



電源  
Power



開始/暫停  
Start/Pause



Wash



Rinse

## ！ 注意！

- 按該兩個按鈕 3 秒，也可以釋放該功能。
- 「兒童鎖」將鎖定除[開/關]外之所有按鈕。
- 切斷電源，兒童保護功能將被解除。

## 洗濯程式的個人化設定

客戶可以根據實際需要選擇洗濯程式，及設定洗濯時間、過水次數、脫水時間、水量和預約時間



## ■ 洗濯操作過程

客戶可按需要自行設定洗衣、過水和脫水的單一過程或組合。不同型號的詳細操作如下：

### 單觸智能洗濯



### 洗衣



### 脫水



### 洗衣 + 過水 + 脫水



### 注意！

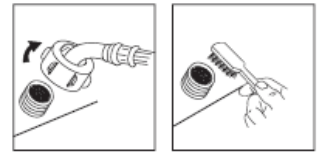
- 注意：其他操作程式組合就像上述那樣。

## 保養指引

請保持洗衣機的外觀整潔，並執行正確的保養，以延長機器使用壽命。

### 進水軟管接頭的清潔

關掉本機並拔下電源。從洗衣機轉鬆和取出進水軟管接頭，並用刷子清潔進水閥的過濾網。



### 棉絨過濾器的清潔

粉末屑和殘留物屑將自動收集到過濾器中。應用後，使用者應定期清潔過濾器並清除粉末屑和殘留物屑。詳細操作方法如下：

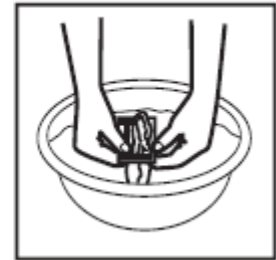
拿出蓋子



取出過濾器



清潔過濾器



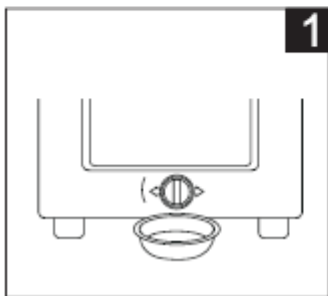


## 清潔排水泵過濾器

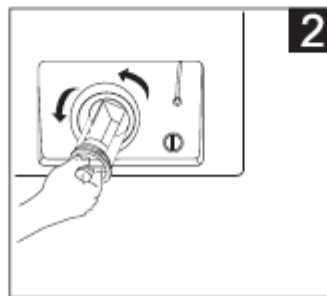


### 警告！

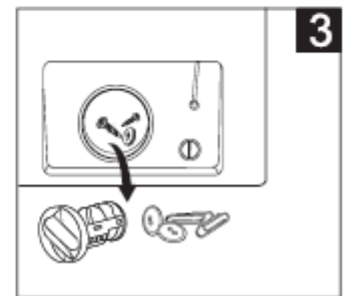
- 小心熱水！
- 讓洗衣液先冷卻。
- 清洗前拔除機器插頭，以免觸電。
- 排水泵過濾器可以從洗濯中過濾紗線和小的異物。
- 定期清潔過濾器，以確保洗衣機的正常運作。



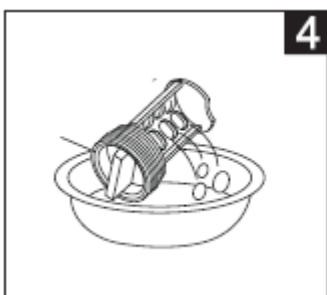
從泵中排出水，並在下面使用一個容器收集。



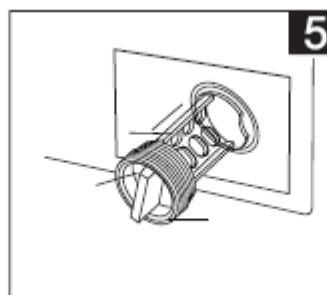
透過逆時針轉動來打開過濾器。



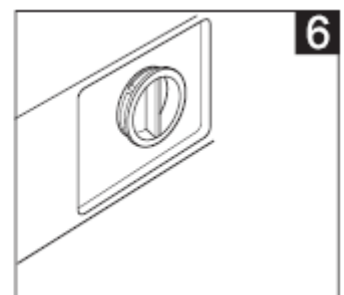
移除外物。



清潔過濾器。



將過濾器放回原處，並調整凸起位置，以在泵孔處對齊。



順時針轉緊泵蓋。



### 小心！

- 確保閥蓋和緊急排水軟管已重新安裝，蓋板應該對齊孔板插入，否則可能漏水。
- 有些機器沒有緊急排水軟管，因此可以跳過步驟 2 和步驟 3。直接旋轉下蓋帽，以使水流入盆中。
- 當本機在使用時，取決於所選的程式，泵中可能有熱水。在洗濯循環中切勿卸下泵蓋，必須等到本機完成循環及水泵已乾。更換蓋子時，請確保重新牢固上緊。

## 疑難排解

如果洗衣機有任何問題，請聯繫授權的服務中心。未經許可，客戶不得拆卸機器。

1. 如果洗衣機不能正常操作，或出現異常或警報，請按以下檢查並改正。

故障	檢驗項目
沒有水流入	<ul style="list-style-type: none"><li>• 電源是否關閉或保險絲是否燒壞。</li><li>• 供水是否被切斷或水壓是否太低。</li><li>• 進水軟管是否正確連接或水龍頭是否打開。</li><li>• 入口閥的過濾網是否被污物堵住。</li><li>• 入口閥的線圈是否損壞。(打開入口閥時，輕微的電磁聲是正常現象)</li><li>• 按電源按鈕後，是否按了「開始/暫停」按鈕。</li></ul>
沒有洗濯	<ul style="list-style-type: none"><li>• 電源是否關閉。</li><li>• 水量是否達到所需的水位。 (如果水量未達到所需的水位，洗衣機將不運作)</li><li>• 是否設定為「預約時間」洗濯模式。(只有預約時間到達時，才會開始操作)</li></ul>
排水異常	<ul style="list-style-type: none"><li>• 排水軟管是否放置得非常高。</li><li>• 排水軟管的末端是否被密封在池中。</li><li>• 排水閥的內部橡膠圈是否被污物堵住。</li></ul>
脫水異常	<ul style="list-style-type: none"><li>• 門蓋是否關閉。</li><li>• 所有衣物是否大部分堆積在滾筒的一側或是否放入過多衣物。</li><li>• 洗衣機是否未放置於穩定狀態或傾斜狀態。(地面不平坦。)</li></ul>

注意：脫水過程中，如果衣物堆放在脫水筒的一側，將導致脫水筒不平衡，並引起敲擊。此時，洗衣機將定位該不平衡現象，並自動修正(填充水量)。不過，如果連續三次改正後仍然不能解決不平衡情況，使用者必須手動並將衣物均勻放在筒內以解決問題。

2. 如果洗衣機不能正常操作，並且該在控制面板有異常指示顯示或機器發出警報，請檢查並按以下改正。

顯示	原因	方法
E1	進水異常警報。	<ol style="list-style-type: none"><li>1. 打開水龍頭。</li><li>2. 水壓低，增加進水量。</li></ol>
E2	排水尚未完成警報。	<ol style="list-style-type: none"><li>1. 檢查排水軟管是否正確放置。清潔管座。</li><li>2. 檢查水位感測器和排水泵。</li></ol>
E3	過程中蓋未關閉警報。	關門。
E4	衣物傾側警報。	均勻放置衣物。
E**	其他	請再試一次，如仍有疑問，請致電維修。

### 以下現象不是洗衣機的故障

徵狀	原因
第一次使用時，排水軟管漏水。	這是在工廠執行性能測試後殘留的水。
在洗濯過程中補充水量。	在洗濯過程中，當水位下降時，將自動補充水。
在脫水過程中，脫水突然停止和充水及過水開始運行。	這是因為衣物堆放在一側。安全開關將開始注水，運行時會擺動。當衣物處於平衡狀態時，脫水過程將繼續進行。如果機器修正三次後故障仍然存在，蜂鳴器將響起警報。 請手動調整平衡衣物。
脫水過程後，衣物不夠乾。	衣物的厚重部分會導致脫水不均勻。

## 規格

適用型號：:ZPS7016/ZPS7E

額定電源	220-240V~50Hz
額定功率	450W
額定洗濯能力	7kg
額定脫水能力	7kg
外形尺寸	550 X 565 X 960mm
標準水壓	0.03MPa-0.8MPa
淨重	39kg
排水模式	高排水

適用型號：:ZPS6016/ZPS6E

額定電源	220-240V~50Hz
額定功率	360W
額定洗濯能力	6kg
額定脫水能力	6kg
外形尺寸	515 X 525 X 930mm
標準水壓	0.03MPa-0.8MPa
淨重	31kg
排水模式	高排水

## 保修

保修不適用於以下情況：

1. 任何產品遭受誤用、變更、不可抗力之天然災害、處理不當、運輸不當、檢測不當或未經授權的維修；
2. 在普通使用下由於正常磨損而導致的外觀問題或缺陷，但不影響產品的性能或使用；
3. 如果產品遭到拆卸或更改；
4. 任何包裝、運輸、出口/進口稅或任何相關費用。

## 注意

- 為了防止電路過載和火災，不應將一個以上符合安全規格的適配器或拖板插入一個插座(避免將其他設備連接到一個插座)。不應將任何適配器插入任何拖板，反之亦然。
- 如果該插座孔不能牢固固定插頭或插座孔或難以插入插頭，停止使用該適配器或擴充單元或插座。
- 本機必須插入特定的 220-240V 插座。使用前請確認插頭已完全插入。不要使用任何適配器或延長線；本機和其他設備不要同時使用相同的電源插座，以免損壞本機。
- 本機僅供家庭使用。

## 環境

不要在本機生命結束時，與其他家用廢物一起扔掉，而是將其交給一個官方收集點進行回收。藉此可以幫助保護環境。



## 重要通知

在任何情況下，我司或供應商皆毋須負責您或任何其他方由於使用或無法使用本產品或來自對保修的任何違反而遭致的任何直接、間接、一般特殊、偶然、相應、代表性或其他損害(包括但不限於人身傷害、財產損失、營業利潤、業務中斷)，即使我們的公司或供應商被告知有可能發生此類損害。在任何情況下，我們的公司或供應商的義務皆不應超過您為本產品支付的金額。

規格、設計和尺寸如有更改，恕不事先通知。

# ZANUSSI

Before using your washing machine, please read this manual carefully and keep it for future reference.

# Washing Machine

## OWNER'S MANUAL

**MODEL :** ZPS6016  
ZPS7016  
ZPS6E  
ZPS7E

### **Read This Manual**

Inside you will find many helpful hints on how to use and maintain your washing machine properly. Just a little preventative care on your part can save you a great deal of time and money over the life of your washing machine. You'll find many answers to common problems in the chart of troubleshooting tips. If you review the chart of Troubleshooting Tips first, you may not need to call for service.

<b><u>CONTENT</u></b>	<b><u>PAGE</u></b>
<b>SAFETY INSTRUCTION</b>	<b>1</b>
<b>INSTALLATION INSTRUCTION</b>	<b>2</b>
<b>PARTS DESCRIPTION</b>	<b>4</b>
<b>OPERATION INSTRUCTION</b>	<b>5</b>
<b>MAINTENANCE INSTRUCTION</b>	<b>10</b>
<b>TROUBLE SHOOTING</b>	<b>12</b>
<b>SPECIFICATION</b>	<b>13</b>
<b>WARRANTY</b>	<b>14</b>

## **SAFETY INSTRUCTION**

1. To avoid electric shock, fire or injury, please read the user manual carefully before using the appliance and keep it for future reference.
2. This appliance is for household use only. Please use suitable power source (220-240V~/50Hz).
3. Never immerse the appliance in water or other liquids.
4. Do not use the appliance under direct sunshine.
5. Please turn off the appliance when not in use otherwise it may result in danger.
6. Please turn off the appliance and unplug the socket when unattended otherwise it may result in danger.
7. Keep the appliance away from children.
8. The appliance is not intended for use by persons (including children) with reduced physical, sensory or mental capabilities, or lack of experience and knowledge, unless they have been given supervision or instruction concerning use of the appliance by a person responsible for their safety.
9. Children should be supervised to ensure that they do not play with the appliance.
10. With any indication of damage or malfunction, please stop using the appliance immediately to avoid hazards. Contact the authorized service center for repair. Do not attempt to repair or change any parts by yourself.
11. If the supply cord is damaged, it must be replaced by the manufacturer, its service agent or similarly qualified persons in order to avoid hazards.
12. Please turn off and unplug the appliance before cleaning or maintenance.
13. Clean the surface of the appliance with a dry cloth. Do not use corrosive detergent or solvent to clean. Do not swash the appliance with water.
14. Please turn off and unplug the appliance when not in use. Make sure the power is off before pulling out the plug and do not pull the cord.
15. When the appliance is not in use for a prolonged period, please turn it off, unplug it, pack it well, and store it in dry cool place.
16. Forbid to put flammable and explosive objects around the appliance, and do not use the appliance in an environment full of flammable gas and powder. Keep away from any fire and heat sources.
17. The new hose-sets supplied with the appliance are to be used and that old hose-sets should not be used.
18. This appliance is for indoor use only.
19. Please do not assemble and disassemble the machine without authorization.
20. Please do not insert your hand and take out clothes inside the spin barrel before it is fully stopped.
21. Please do not install the machine in damp and raining environment to avoid electric shock, fire, faults and distortion accidents.
22. It is prohibited to wash the clothes touching with kerosene, gasoline, alcohol and other flammable materials.
23. Regularly clean the power plug to remove dust and dirt to avoid contact failure.
24. Please well connect the earth line of socket to avoid electric shocking by accidental leakage.
25. Please insert the power plug tightly.
26. Please do not pull out or insert the plug with wet hands to avoid electric shocking.
27. Please ensure that the water inlet hose is connected and the tap is opened before washing clothes.
28. Do not connect the hot water supply to the appliance.
29. It is strictly prohibited to place and sit children or lay weights on the washer.
30. Please do not wash down jacket, raincoat, fishing coat and similar clothes in the washer.

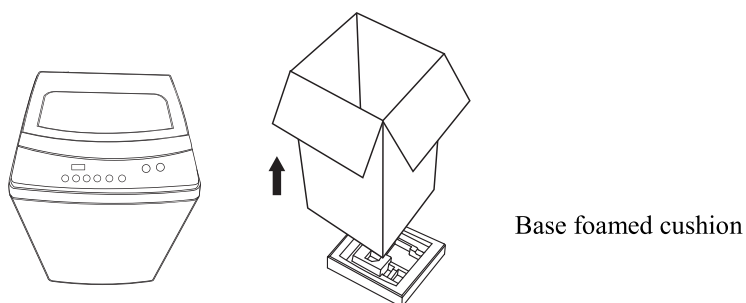
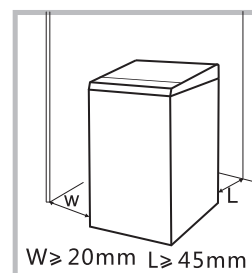
# INSTALLATION INSTRUCTION

## Installation area

- Stability is important to prevent the product from wandering!
- Make sure that the product should not stand on the power cord.
- Keep far away from the heat resources such as coal or gas.

## Remove package

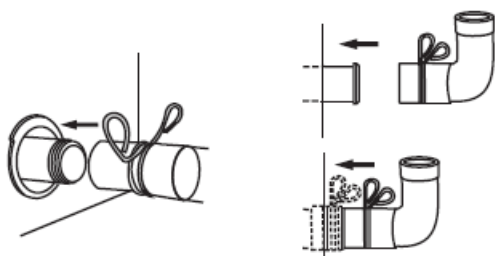
- Remove the package and take out the base foamed cushion.
- Open the lid of the washer and take out the accessories.
- A trial operation or washing on the base foamed cushion is strictly forbidden.



## Installation of drain hose

Note: Use only the new supplied water hose-sets with the new appliance. Do not use a hose from your existing machine or a hose that has been used previously.

- Completely seat the drain hose over the drain connector.
- Fix and tighten it with a hoop. (As shown in the figure and you can use a plier to finish it.)

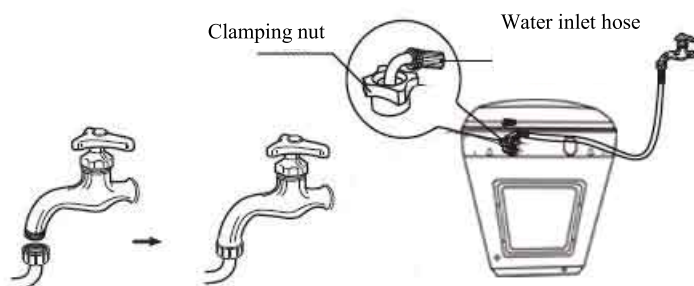


## Installation of water inlet hose

Put the water inlet hose (which has metallic filtering bag) screw on to the tap.

Tightly screw another end of water inlet hose on water inlet valve. (with rubber seal ring inside).

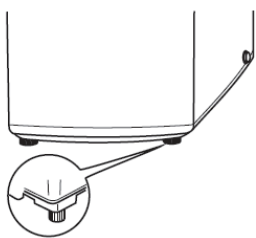
Note: When tightening the clamping nut, evenly apply the force and do not twist the water inlet valve to avoid breaking of water inlet valve joint.





## Preparation before washing

1. Adjust the foot knobs to make the washer be placed stable.



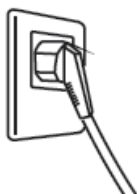
Adjusting foot knobs (extend when clockwise rotating and shorten when anti-clockwise rotating): Slightly incline the washer first and loosen the adjustable foot knobs. Adjusting the foot knobs so as to ensure four corners of the washer are steadily contacted with the ground. Then tighten the adjustable foot knobs to lock them. If the ground is obviously not flat, please do correction to the ground or choose another flat ground surface for placing, otherwise the washer barrel will incline and knock the cabinet.

2. Install the water inlet hose.

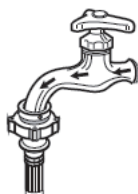
Inlet hose



3. Connect with power source.

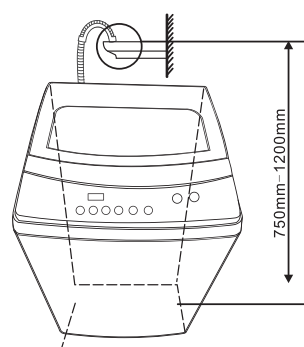


4. Open the water tap.



5. Put down the drain house.

Upper drain



Note: The water will overflow when the height of the drain hose under 750mm.

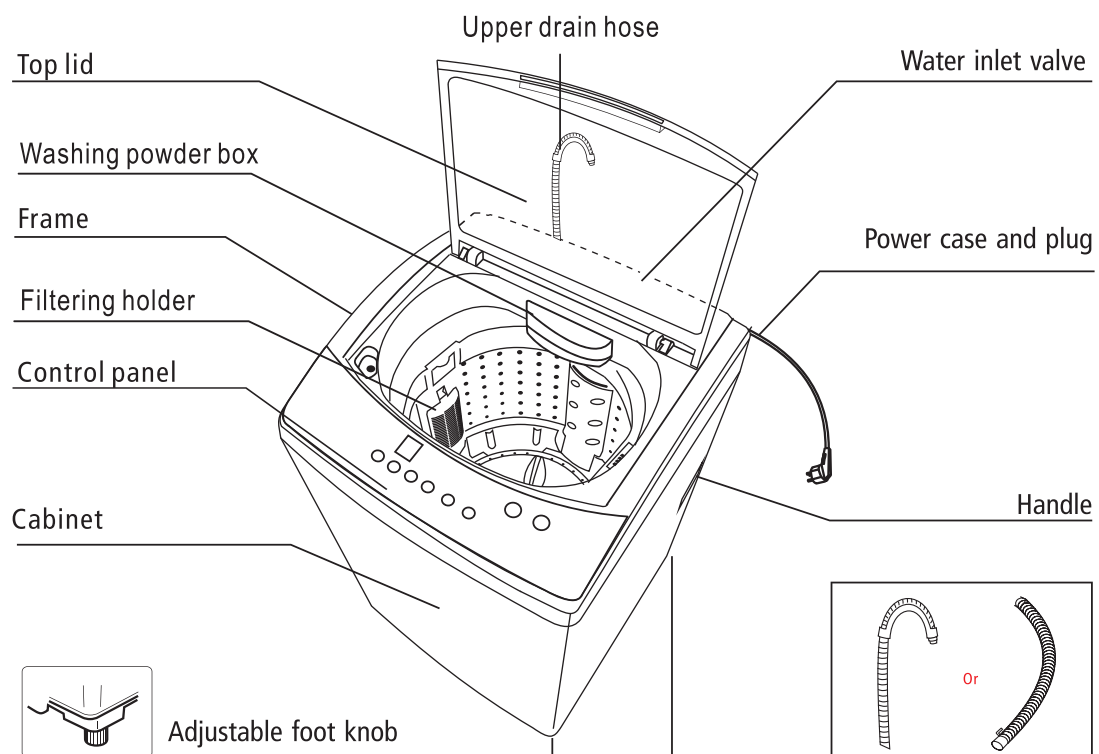
6. Put in clothes and suitable amount of washing powder.



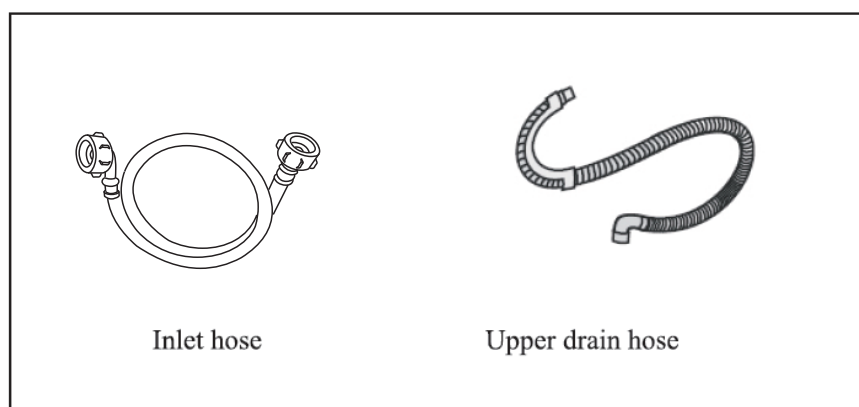
### Note!

- Note: Before washing, please do take out coins, keys and other hard goods, and pull to close the zip fastener to prevent clothes and barrel from damage.

## PARTS DESCRIPTION

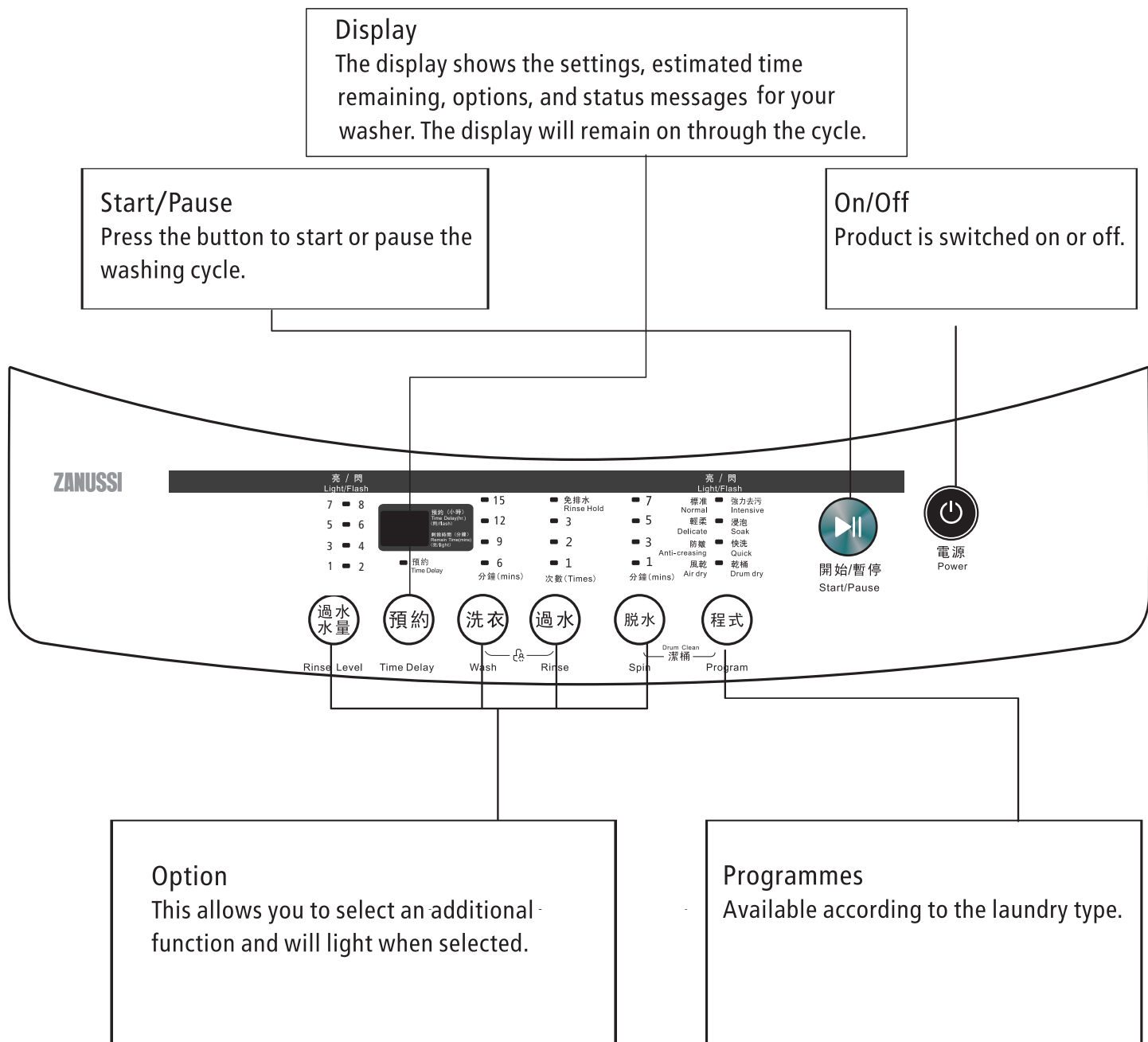


## Accessories

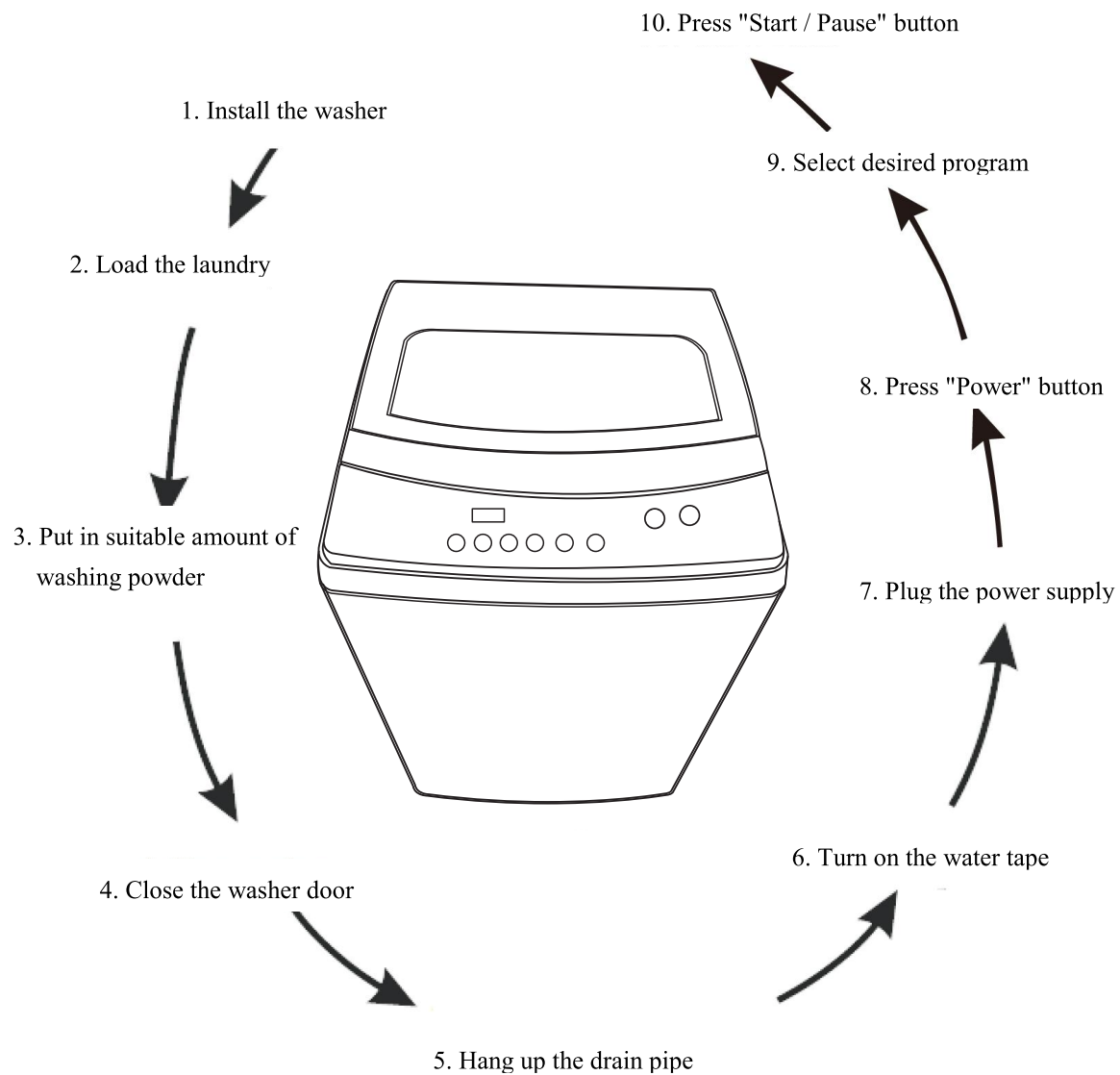


# OPERATION INSTRUCTION

## Control Panel



## Quick Start



### Program selection

1. Press "Power" button
2. Select the proper water level or other attached functions.
3. Press "Start / Pause" button.

### The washer stops

- When the washer stops, the buzzer will buzz continuously for 6 times and then the power will be automatically cut off.
- Turn off the water tap.
- Although the power can be cut off automatically, the power plug must be pulled out as well for safety.

## Programs Table

### ONE TOUCH SMART WASH

- After power on, push "start/pause" button directly into "One Touch Smart Wash" program. WM will perform fuzzy detection automatically. The water level and program will be selected according to amount of clothing. And water level lamp is flashing continuously, as digital display shows "-" at the same time.
- If other buttons is pressed before and water left in the inner tub, the One Touch Smart Wash function will be canceled. Then the program will be directly set into Normal with default water level.

### NORMAL

- Standard fabric washing program, suitable to wash ramie cotton fabric.

### DELICATE

- To wash delicate clothes.

### ANTI-CREASING

- To wash shirts and cotton or wool clothes and keep clothes from twisting and wrinkling.

### AIR DRY

- Press the "Special" button to choose AIR DRY program. The program can air dry laundries (not dried completely), and dry the outer tub and the inner tub at the same time, which can avoid mildew growing at the outer tub and the inner tub.

By bringing natural air into the tub during spinning, this course removes water with ventilation, and clothing can be dried efficiently.

### INTENSIVE

- To wash more dirty clothes. The water flow is stronger.

### SOAK

- Washing ability is strong, washing more dirty clothes.

### QUICK

- To wash clothes that are not too dirty with a shorter time.

### DRUM DRY

- Running the DRUM DRY program after wash can clear most of the water on both sides of the barrel and minimize the chance of mildew growing. Please run at least once a week.
- Do not put any clothes or wash powder into the washer while the DRUM DRY program is running.
- Please run the drum clean program immediately if any mildew is formed on the barrel.

### DRUM CLEAN

- It will be adhered with wash powder residue inside and outside the barrel after certain uses. Please clean it regularly. Otherwise, the adhering residue will take off during the wash process, and make the clothing dirty. Suggest cleaning the tub at least once a month.

### NOTE:

- Please do not start the program continuously.
- You should put few chloric bleacher to enhance the effect of tub cleaning.
- This program is designed to clean the barrel. Do not put the clothes in.

### RINSE HOLD

- After the last rinse, the washer will not spin, users can take out the clothes, then use the rinse water washing other clothing.

### CHILD LOCK

- To avoid mis operation by children.

## Option



### Rinse Level

select water level according to clothing categories, degree of soiling and washing habits of customers

Rinse Level



Wash



Rinse



Spin

### Function

washing time, rinsing times, spinning time and other settings can be selectable



Time Delay

### Delay

Set the Delay function:

1. Select a programme
2. Press the Delay button to choose the time (the delaying time is 0-24 H.)
3. Press [Start/Pause] to commence the delay operation



電源  
Power



Program



Time Delay



開始/暫停  
Start/Pause

Cancel the Delay function:

Press the [Delay] button until the display be 0H. It should be pressed before starting the programme. If the programme already started, should press the [On/Off] button to reset the programme.



### Caution!

- If there is any break in the power supply while the machine is operating, a special memory stores the selected programme and when the power is restarted, press the [Start/Pause] button the program is continues.

### Tub clean



電源  
Power



Spin

Drum Clean  
漂桶



Program



開始/暫停  
Start/Pause

### Child Lock

To avoid mis operation by children.



電源  
Power



開始/暫停  
Start/Pause



Wash



Rinse

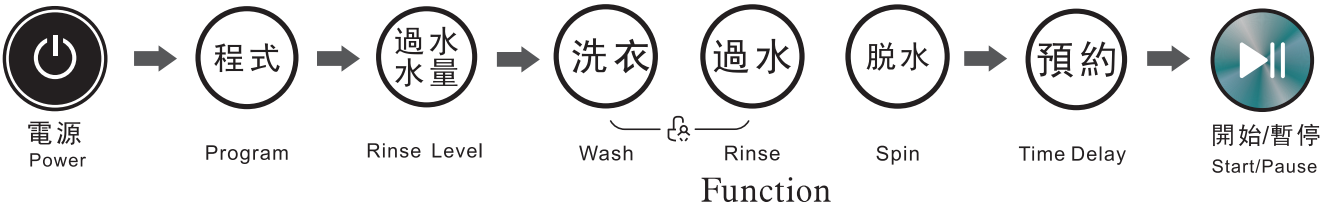


### Caution!

- Press the two button 3sec. also to be released the function.
- The "Child Lock" will lock all buttons except [ On/Off ].
- Cut off the power supply , the kid's protection is to be released .

personalized setting of washing program

Customers can select washing program according to actual demand, and set washing time、rinsing times、spinning time、water volume and appointment time



operations of washing process

customers can set single process or combinations of washing、rinsing and spinning freely according to demand. Detailed operations as follows for different models:

One Touch Smart Wash



Wash



Spin



Wash + Rinse + Spin



Note!

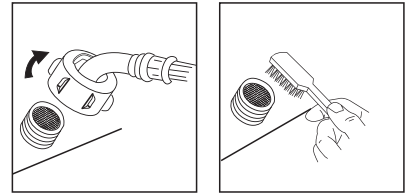
- Note: other process combinations are just like above.

## MAINTENANCE INSTRUCTION

Please keep the washer with neat appearance and perform correct maintenance to prolong the service life.

### Cleaning of water inlet hose joint

Turn off the appliance and unplug the power supply. Unscrew and remove the water inlet hose joint from the washer and clean the filtering screen of inlet valve with brush.

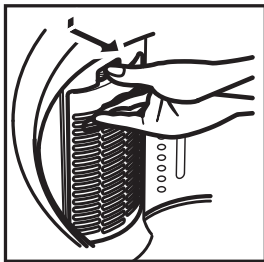


### Cleaning of lint filter

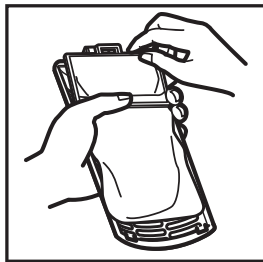
The flock powder and flock residues will be automatically collected into the filter. After application, users shall clean the filter to remove the flock powder and flock residues regularly.

Detail operation methods as follows:

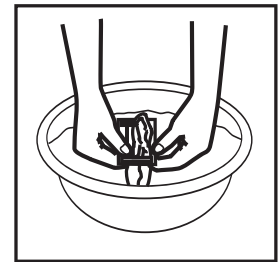
Take out the cover



Take out the filter



Clean the  
filter

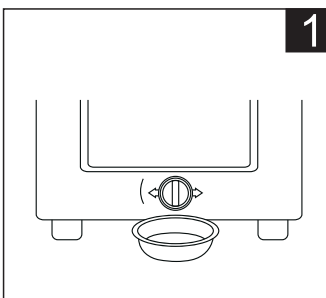




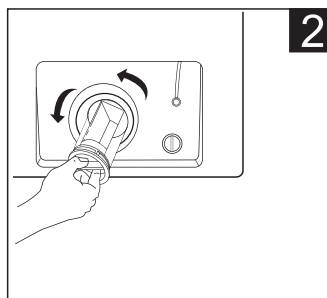
## Cleaning drain pump filter

### ⚠ Warning!

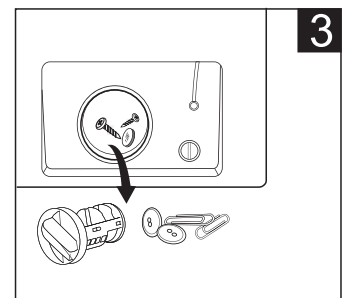
- Be careful of the hot water!
- Allow detergent solution to cool down.
- Unplug the machine to avoid electrical shock before washing.
- Drain pump filter can filter the yarns and small foreign matters from the washing.
- Clean the filter periodically to ensure the normal operation of washing machine.



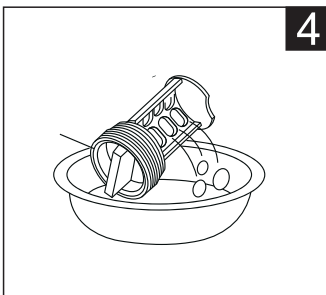
1  
Drain the water out of the pump, under which use a container to collect.



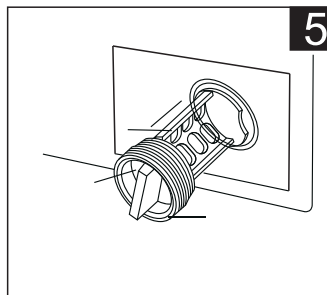
2  
Open the filter by turning to the counter clockwise



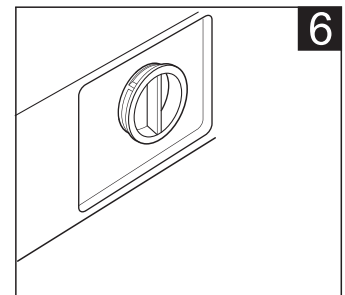
3  
Remove extra matter



4  
Clean the filter.



5  
Restore it and adjust the convex place to align at the pump hole.



6  
Tighten the pump cover clockwise.

### ⚠ Caution!

- Make sure that valve cap and emergency drain hose are reinstalled properly, cap plates should be inserted aligning to hole plates otherwise water may leak;
- Some machines don't have emergency drain hose, so step 2 and step 3 can be skipped. Rotate lower cover cap directly to make water run into basin.
- When the appliance is in use or particular programmes are selected there can be hot water in the pump. Never remove the pump cover during a wash cycle, always wait until the appliance has finished the cycle, and is empty. When replacing the cover, ensure it is securely re-tightened.

## TROUBLESHOOTING

Please contact the authorized service center if the washer has any problems. Customers should not dismantle the machine without permission.

1. If the washer does not work normally, or appears abnormality or alarms, please check and correct as follows.

Faults	Inspection Items
No water flows in	<ul style="list-style-type: none"> <li>If the power is off or the fuse is burned out.</li> <li>If the water supply is cut off or the water pressure is too low.</li> <li>If the inlet hose is properly connected or the water tap is opened.</li> <li>If the filtering screen of inlet valve is blocked by dirt.</li> <li>If the coil of inlet valve is damaged. (The slight electromagnetic sound is normal phenomenon when the inlet valve is switched on)</li> <li>If the "Start / Pause" button is pressed after the power button is pressed.</li> </ul>
No washing	<ul style="list-style-type: none"> <li>If the power is off.</li> <li>If the water amount reaches to the required water level. (The washer will not work if the water amount does not reach the required water level)</li> <li>If it is set to "TIME DELAY" washing mode. (It will only start to work until the reservation time reached)</li> </ul>
Abnormal draining	<ul style="list-style-type: none"> <li>If the water drain hose is placed very high.</li> <li>If the end of water drain hose is sealed in pond.</li> <li>If the internal rubber ring of drain valve is blocked by dirt.</li> </ul>
Abnormal spinning	<ul style="list-style-type: none"> <li>If the door lid is closed.</li> <li>If all clothing piled largely at one side of barrel or the clothing is excessively placed.</li> <li>If the washer is not placed in stable condition or it is placed in inclination state. (The ground is not flat).</li> </ul>

Note: During the spinning process, if the laundry is piled at one side of the spin barrel, it will cause unbalance of the spin barrel, and resulting in striking. At that moment, the washer will locate the unbalance phenomenon and automatically correct it (fill in water). However, if unbalance situation is not solved after continuous three corrections, users have to manually and evenly place the clothing inside the barrel to solve the problem.

2. If the washer does not work normally, and the abnormal indication is shown in the control panel or the machine alarms, please check and correct as follows.

Display	Causes	Method
E1	Alarm for abnormal water intaking.	1. Open the water tap. 2. Water pressure is low, increase inlet water amount.
E2	Alarm for water drain has not finished.	1. Check if the water drain hose is placed correctly. Clean the stem. 2. Check the water level sensor and drain pump
E3	Alarm for lid not closed during the process.	Close the lid.
E4	Alarm for laundry stay at one side.	Place the clothes evenly.
E**	Others	Please try again first, Call for repairing if there are still troubles.

### Following phenomena are not faults of washer

Symptom	Causes
Water leaking from the water drain hose when use for first time.	This is residue water after the performance test in the factory.
Make up water during washing process.	During the washing process, the water will be automatically made up when the water level declined.
During the dehydrating process, spin suddenly stops and water filling and rinsing start running.	This is because the clothes are piled at one side. The safety switch will start to work to make up water, rabble while running. The spinning process will be continued when the clothes is in balance status. In case of failure of three corrections of the machine, the buzzer will alarm. Please manually adjust the balance of the clothes.
The clothes are not sufficiently dry after the spinning process.	The heavy and thick part of the clothes will cause uneven spin.

## SPECIFICATION

Model:ZPS7016/ZPS7E

Rated power supply	220-240V~50Hz
Rated power	450W
Rated washing capacity	7 kg
Rated spin capacity	7 kg
Overall dimensions	550 x 565 x 960 mm
Standard water pressure	0.03MPa-0.8MPa
Net weight	39 kg
Draining mode	Upper drain

Model:ZPS6016/ZPS6E

Rated power supply	220-240V~50Hz
Rated power	360W
Rated washing capacity	6 kg
Rated spin capacity	6 kg
Overall dimensions	515 x 525 x 930 mm
Standard water pressure	0.03Mpa-0.8Mpa
Net weight	31kg
Draining mode	Upper drain

## WARRANTY

The warranty shall not apply:

1. to any product subjected to misuse, alteration, act of God, improper handling, improper transport, improper testing or unauthorized repair;
2. to cosmetic problems or defects which result from normal wear and tear under ordinary use yet not affecting the performance or use of the product;
3. if the product is disassembled or altered;
4. to any packing, transportation, export / import tax or any related expenses.

## NOTES

- To prevent circuit overload and fire, no more than one safety compliant adaptor or extension unit should be inserted into a socket outlet. (Avoid connecting other appliances to the one socket outlet) No adaptor should be inserted into any extension unit or vice versa.
- Stop using an adaptor or an extension unit or a socket if its socket holes cannot firmly hold a plug if it is too hard to insert a plug into it.
- This appliance must be plugged into a specific 220-240V socket. Please make sure the plug is fully plugged-in before use. Do not use any adapter or extension cord; Never use the same supply socket for this appliance and other appliances at the same time, in order to avoid damage to this appliance.
- THE APPLIANCE IS FOR HOUSEHOLD USE ONLY.

## ENVIRONMENT

Do not throw away the appliance with the normal household waste at the end of its life, but hand it in at an official collection point for recycling. By doing this, you help preserving the environment.



## IMPORTANT NOTICES

IN NO EVENT SHALL OUR COMPANY OR THE SUPPLIER BE LIABLE TO YOU OR ANY OTHER PARTY FOR ANY DIRECT, INDIRECT, GENERAL SPECIAL, INCIDENTAL, CONSEQUENTIAL, EXEMPLARY OR OTHER DAMAGES ARISING OUT OF THE USE OR INABILITY TO USE THE PRODUCT (INCLUDING, WITHOUT LIMITATION, DAMAGES FOR INJURY, LOSS OF PROPERTY, BUSINESS PROFITS, BUSINESS INTERRUPTION) OR FROM ANY BREACH OF WARRANTY, EVEN IF OUR COMPANY OR SUPPLIER HAS BEEN ADVISED OF THE POSSIBILITY OF SUCH DAMAGES. IN NO CASE SHALL OUR COMPANY OR SUPPLIER'S LIABILITY EXCEED THE AMOUNT YOU PAID FOR THE PRODUCT.

*Specifications, designs and dimensions are subject to change without prior notice.*