
ZANUSSI

REFRIGERATOR



INSTRUCTION MANUAL

Model No.: ZTB2000A-A

ZTB2500A-A

SAFETY



WARNING!

It is hazardous for anyone other than authorized service personnel to carry out servicing or repairs which involves the removal of covers. To avoid the risk of an electric shock do not attempt to repair this appliance yourself.

WARNING!

Risk of fire / flammable materials.



Safety tips

Do not use electrical appliances such as a hair dryer or heater to defrost your Refrigerator.

Containers with flammable gases or liquids can leak at low temperatures.

Do not store any containers with flammable materials, such as spray cans, fire extinguisher refill cartridges etc. in the Refrigerator.

Do not place carbonated or fizzy drinks in the freezer compartment. Ice lollies can cause “Frost/Freeze burns”. If consumed straight from the freezer.

Do not remove items from the freezer compartment if your hands are damp/wet, as this could cause skin abrasions or “Frost/Freezer burns”. Bottles and cans must not be placed in the freezer compartment as they can burst when the contents freeze.

Manufacturer’s recommended storage times should be adhered to. Refer to relevant instructions.

Do not allow children to tamper with the controls or play with the Refrigerator. The Refrigerator is heavy. Care should be taken when moving it. It is dangerous to alter the specification or attempt to modify this product in any way.

Do not store inflammable gases or liquids inside your Refrigerator.

If the power cable is damaged, it must be replaced by the manufacturer, its service agent or similarly qualified persons in order to avoid a hazard.

This appliance can be used by children aged from 8 years and above and persons with reduced physical, sensory or mental capabilities or lack of experience and knowledge if they have been given supervision or instruction concerning use of the appliance in a safe way and understand the hazards involved. Children shall not play with the appliance. Cleaning and user maintenance shall not be made by children without supervision.

This appliance is intended to be used in household only.

Do not store explosive substances such as aerosol cans with a flammable propellant in this appliance.

This appliance is not intended for use by persons (including children) with reduced physical, sensory or mental capabilities, or lack of experience and knowledge, unless they have been given supervision or instruction concerning use of the appliance by a person responsible for their safety. Children should be supervised to ensure that they do not play with the appliance.

– WARNING: Keep ventilation openings, in the appliance enclosure or in the built-in structure, clear of obstruction.

– WARNING: Do not use mechanical devices or other means to accelerate the defrosting process, other than those recommended by the manufacturer.

– WARNING: Do not damage the refrigerant circuit.

– WARNING: Do not use electrical appliances inside the food storage compartments of the appliance, unless they are of the type recommended by the manufacturer.

– WARNING: Refrigerating appliances – in particular a refrigerator-freezer Type I – might not operate consistently (possibility of defrosting of contents or temperature becoming too warm in the frozen food compartment) when sited for an extended period of time below the cold end of the range of temperatures for which the refrigerating appliance is designed;

– WARNING: The refrigerant used in your appliance and insulation materials requires special disposal procedures.

- WARNING: When positioning the appliance, ensure the supply cord is not trapped or damaged.
- WARNING: Do not locate multiple portable socket-outlets or portable power supplies at the rear of the appliance.

Climate Range

The information about the climate range of the appliance is provided on the rated plate. It indicates at which ambient temperature (that is, room temperature, in which the appliance is working) the operation of the appliance is optimal (proper).

Climate range	Permissible ambient temperature
SN	from +10°C to +32°C
N	from +16°C to +32°C
ST	from +16°C to +38°C
T	from +16°C to +43°C

Note: The limit values of the range of ambient temperature for the climate classes for which the refrigerating appliance is designed and the fact that the internal temperatures could be affected by such factors as the location of the refrigerating appliance, ambient temperature and the frequency of door opening, and, if appropriate, a warning that the setting of any temperature control device might have to be varied to allow for these factors;

Electrical Connection

⚡WARNING⚡

Improper use of the grounded plug can result in the risk of electrical shock. If the power cord is damaged, have it replaced by an authorized service center.

This refrigerator should be properly grounded for your safety. The power cord of this refrigerator is equipped with a three-prong plug which mates with standard three prong wall outlets to minimize the possibility of electrical shock. Do not, under any circumstances, cut or remove the third ground prong from the power cord supplied.

This refrigerator requires a standard 220 -240V A.C. ~/50Hz electrical outlet with three-prong ground.

This refrigerator is not designed to be used with an inverter.

The cord should be secured behind the refrigerator and not left exposed or dangling to prevent accidental injury.

Never unplug the refrigerator by pulling the power cord. Always grip the plug firmly and pull straight out from the receptacle.

Do not use an extension cord with this appliance. If the power cord is too short, have a qualified electrician or service technician install an outlet near the appliance. Use of an extension cord can negatively affect the performance of the unit.

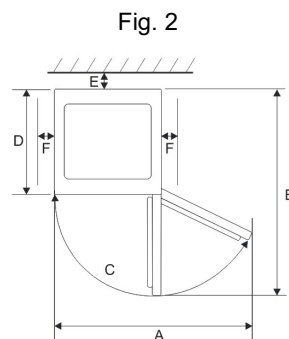
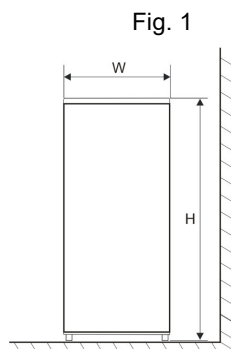
Prepare with requirements

Installation Location

When selecting a position for your Refrigerator you should make sure the floor is flat and firm, and the room is well ventilated. Avoid locating your Refrigerator near a heat source, e.g. cooker, boiler or radiator. Also avoid direct sunlight in out-buildings or sun lounges. If you are placing your Refrigerator in an out-building such as a garage or annex ensure that the Refrigerator is placed above the damp course, otherwise condensation will occur on the Refrigerator cabinet. Never place the Refrigerator in a wall recess or into fitted cabinets or furniture. When your Refrigerator is working, the grille at the back may become hot and the sides warm. Therefore, the back part of the refrigerator must be installed at least 50mm of free space, both sides should be left more than 100mm. Do not drape the Refrigerator with any covering.

Dimensions in mm

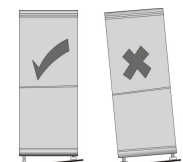
W	D	H	A	B	C(°)	E	F
545	590	1465	845	1095	125	50	100
545	590	1700	845	1095	125	50	100



Note: Figure 1, Figure 2 only as a product space demand size schematic diagram.

Leveling the Refrigerator

If the Refrigerator is not level, the door and magnetic seal alignment will be affected and may cause you Refrigerator to work incorrectly. Once the Refrigerator is placed in its final location, adjust the leveling feet at the front by turning them.



Cleaning before use

Wipe the inside of the Refrigerator with a weak solution of bicarbonate of soda. Then rinse with warm water using a damp sponge or cloth. Wash the baskets and shelves in warm soapy water and dry completely before replacing in the Refrigerator. The external parts of the Refrigerator can be cleaned with wax polish.

Before plugging in YOU MUST

Check that you have a socket which is compatible with the plug supplied with the Refrigerator. **Before switching on!** DO NOT SWITCH ON UNTIL FOUR HOURS AFTER MOVING THE REFRIGERATOR.

The coolant fluid needs time to settle. If the appliance is switched off at any time, wait 30 minutes before switching back on to allow the coolant fluid to settle.

Before filling your refrigerator

Before storing foods in your refrigerator, turn the refrigerator on and wait for 24 hours, to make sure it is working properly and to allow the refrigerator to reach the correct temperature.

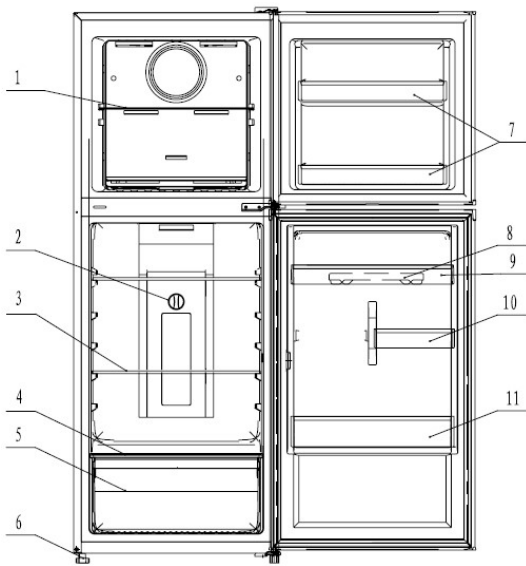
INTRODUCTION

Before use

Please read these instructions and the Safety guidelines on page 1 carefully before using your new Refrigerator. The Refrigerator is for indoor, domestic use only.

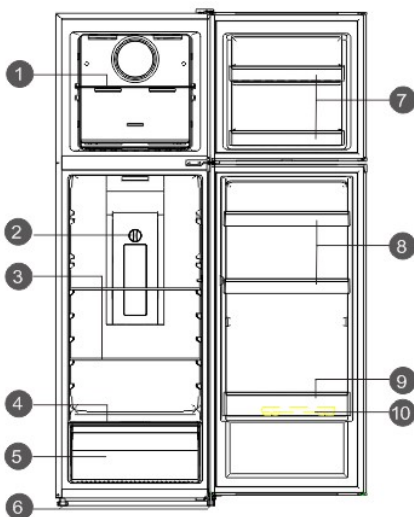
General Description of Refrigerator

ZTB2000A-A



No	Description
1	Freezer Shelf
2	Thermostat
3	Refrigerator Glass Shelf
4	Crisper Cover
5	Salad Crisper
6	Adjustable Foot
7	Little Bottle Rack
8	Egg tray
9	Upper Bottle Rack
10	Half Bottle Rack
11	Bottom Bottle Rack

ZTB2500A-A



No	Description
1	Freezer Shelf
2	Thermostat
3	Refrigerator Glass Shelf
4	Crisper Cover
5	Salad Crisper
6	Adjustable Foot
7	Little Bottle Rack
8	Upper Bottle Rack
9	Bottom Bottle Rack
10	Egg tray

START

The temperature inside the refrigerator is controlled by the potentiometer installed in the fridge. The temperature inside the refrigerator varies depending on the opening and closing doors of the refrigerator, the ambient temperature, and the place of placement.

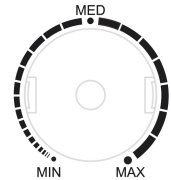
Under normal conditions, considering the food preservation and energy saving, in spring and summer, we recommend user to adjust the fridge temperature to "MED".

In winter, the freezer can be adjusted to "MED" and "MAX".

During the actual use, the refrigerator air adjustment lever may get frozen as a result of high humidity or frequent opening of the door. In such case, do not adjust the air lever by force; Instead, you are suggested to heat the air adjustment lever locally using a hot towel to make the frozen air lever thaw before adjusting it, so as to avoid it from being damaged.

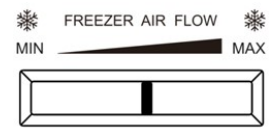
Fridge temperature adjustment

1. When the fridge temperature adjustment knob from the "MAX" to the "MIN", the fridge temperature gradually increased.
2. When you want to strengthen the fridge cooling, the fridge temperature adjustment knob to "MAX" direction adjustment, so that the compressor running time will be extended, the fridge temperature will be reduced accordingly.



Freezer temperature adjustment

1. When the freezer temperature control knob to remain in the same position, adjust the settings freezer volume slider in position "MAX", will provide the greatest amount of freezing cold, which leads to the lowest temperature in the freezing chamber.
2. When the freezer temperature control knob to remain in the same position, adjust the settings freezer volume slider in position "MIN", will provide the minimum amount of cold freezer, which resulted in the highest temperature in the freezing room.



IN USE

1. The appliance might not operate consistently (possibility of defrosting of contents or temperature becoming too warm in the freezer compartment) when sited for an extended period of time below the cold end of the range of temperatures for which the refrigerating appliance is designed
2. The information about the climate range of the appliance is provided on the rated plate.
3. The fact that the internal temperatures could be affected by such factors as the location of the refrigerating appliance, ambient temperature and the frequency of door opening, and, if appropriate, a warning that the setting of any temperature control device might have to be varied to allow for these factors
4. The fact that effervescent drinks should not be stored in freezer compartments or cabinets or in low-temperature compartments or cabinets, and that some products such as water ices should not be consumed too cold
5. The need to not exceed the storage time(s) recommended by the food manufacturers for any kind of food

Storage of food

1. The cook dishes can be put into refrigerator to keep fresh after their temperature decreases to room temperature.
2. Egg pockets and bottle pockets for eggs, butter, milk and bottle drinks, etc. Storage of food or containers should be left between the gap, so as not to affect the air-conditioning cycle
3. The arrangement of food for storage, in particular the need to avoid cross-contamination, such as food to be stored should be wrapped with clean plastic film or fresh keeping paper, then distributed to several frames even to avoid contamination and the loss of water and smell mixture.
4. Fruits and vegetables should be put into the salad crisper to prevent excessive evaporation of water and freshness.
5. Cool hot food down to the room temperature before storing otherwise consumption of electricity will increase and would lead to frost forming inside.
6. In the case of refrigerating appliances with chill compartment, a statement to the effect that some types of fresh vegetables and fruits are sensitive to cold, and that therefore they are not suitable for storage in this kind of compartment.
7. The fact that effervescent drinks should not be stored in freezer compartments or cabinets or in low-temperature compartments or cabinets, and that some products such as water ices should not be consumed too cold

Tips for keeping food perfect in the Fridge

1. Cooked meats should always be stored on a shelf above raw meats to avoid bacterial transfer. Keep raw meats on a plate which is large enough to collect juices and cover it with cling film or foil.
2. This allows cold air to circulate around the Fridge, ensuring all parts of the Fridge are kept cool.
3. To prevent transfer of flavors and drying out, food should be separately packed or covered. Fruit and vegetables need not be wrapped.
4. Allow pre-cooked food to cool down before placing in the Fridge. This will help to stop the internal temperature of the Fridge from rising.
5. To prevent cold air escaping, try to limit the number of times you open the door. When retuning from shopping, sort foods to be kept in your Fridge before opening the door. Only open the door to put food in or take it out.

Interruption of power supply or failure of the refrigerating system

The care required with regards to frozen food in storage in the event of an extended non-running of the refrigerating appliance (interruption of power supply or failure of the refrigerating system)

1. Do not open the refrigerator door as much as possible so that even in hot summer food can be safely and freshly kept for hours.

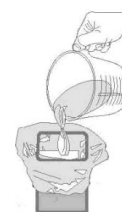
2. If you have a power outage notice in advance:
 - 1) Please an hour in advance will be temperature control stalls transferred to a strong cold position, so that the refrigerator fully frozen. (Note that this time do not store new food!) To be restored after the timely supply of temperature control gear to the original location.
 - 2) You can also make some ice, with a watertight container, and put it in the upper part of the refrigerator. So that it is necessary to extend the time for fresh food to be deposited.

Preparations for refrigerating

1. Leave cooked food to cool completely.
2. Chill food in a Fridge before freezing if possible.
3. Consider how you want to cook the food before freezing it.
4. Don't freeze food in metal containers as you may want to microwave it straight from the refrigerator.
5. Use special refrigerator bags available from supermarkets, refrigerator film, polythene bags, plastic containers, aluminum foil for acidic foods (such as citrus fruits). Do not use thin cling film or glass. Do not use used food containers (unless cleaned thoroughly first).
6. Exclude as much air from the container as possible. You could buy a special vacuum pump which sucks excessive air out of the packaging.
7. Leave a small amount of "air space" when freezing liquids, to allow for expansion.
8. You can use the space in the refrigerator most efficiently if you freeze liquids (or solids with liquids, such as stew) in square blocks. This is known as "performing" Pour the liquid into a polythene bag which is inside a square sided container. Freeze it like this, then remove it from the container and seal the bag.

Tips for shopping for frozen foods

1. When you are buying frozen food, look at the Storage Guidelines on the packaging. You will be able to store each item of frozen food for the period shown against the star rating. This is usually the period stated as "Best, Before", found on the front of the packaging.
2. Check the temperature of the frozen food cabinet in the shop where you buy your frozen foods.
3. Make sure the frozen food package is in perfect condition.
4. Always buy frozen products last on your shopping trip or visit to the supermarket.
5. Try to keep frozen food together whilst shopping, and on the journey home as this will help to keep the food cooler.
6. Don't buy frozen food unless you can freeze it straight away. Special insulated bags can be bought from most supermarkets and hardware shops. These keep frozen food cold for longer.
7. For some foods, thawing before cooking is unnecessary. Vegetables and pasta can be added directly to boiling water or steam cooked. Frozen sauces and soups can be put into a saucepan and heated gently until thawed.
8. Use quality food and handle it as little as possible. Freeze food in small quantities, it freezes faster, takes less time to thaw and enables you to eat it in the quantity you need.
9. First, estimate the amount of food you will be freezing. If you are freezing large amounts of fresh food, remember to turn the control dial to the low temperature range. This will lower the temperature in the Freezer, freezing your food quicker and helping to keep the goodness in. However, you should do this sparingly to conserve energy.



Defrosting

This appliance is designed as automatic defrosting, no need to defrost by hand.

Moving the Refrigerator

Location

Do not place your Refrigerator near a heat source, e.g. cooker, boiler or radiator. Also avoid direct sunlight in out-buildings or sun lounges.

Leveling the Refrigerator

Make sure the Refrigerator is level. Use the rotating leveling feet at the front. If the Refrigerator is not level, the doors and magnetic seal alignments will be affected and may cause your Refrigerator to work incorrectly.

After the Refrigerator is in place, it can be used after 4 hours. This allows time for the coolant to settle.

Installation

Don't cover or block the vents or grilles of your appliance.

If you're not at home for a long time

- If the appliance will not be used for several months, turn off the refrigerator first and then unplug the unit from the wall outlet.
- Remove all the food.
- Clean and dry the interior thoroughly. To prevent odor and mold growth, leave the door open slightly: blocking it open if necessary or have the door removed.
- Keep the cleaned fridge in a dry, ventilated place away from the heat source, where the fridge is placed smoothly and do not place heavy objects on top of the fridge.
- Use extreme caution in the case of children. The unit should not be accessible to child's play.

Save energy

1. Install the refrigerator in the coolest part of the room, out of direct sunlight and away from heating ducts or registers. Do not place the refrigerator next to heat-producing appliances such as a range, oven or dishwasher.
2. The refrigerator door should remain open only as long as necessary; do not place hot food inside the refrigerator.
3. Organize the refrigerator to reduce door openings. Remove as many items as needed at one time and close the door as soon as possible.
4. The refrigerator door should be properly closed to avoid increased energy consumption, and the formation of excess ice and / or condensation inside.
5. Constantly circulating cold air keeps the temperature homogenous inside the refrigerator. For this reason, it is important to properly distribute the food, to facilitate the flow of air.

6. Cover foods and wipe containers dry before placing them in the refrigerator. This cuts down on moisture build-up inside the unit.
7. Do not overcrowd the refrigerator or block cold air vents. Doing so causes the refrigerator to run longer and use more energy. Shelves should not be lined with aluminum foil, wax paper or paper toweling. Liners interfere with cold air circulation, making the refrigerator less efficient, which could cause food spoilage.
8. The arrangement of food for storage and for freezing, where applicable, particularly including advice that food to be frozen is not to be placed in direct contact with food in storage and, if appropriate, that it could be necessary to reduce the quantity to be frozen if freezing every day is anticipated.
9. During prolonged absences (example: vacations), it is advisable to disconnect the refrigerator, remove all the food, and clean it. The door should be left slightly open to avoid mold and unpleasant odors. This will not affect the refrigerator when it is reconnected.
10. During short absences (example: holidays), the refrigerator can remain on. However, remember that prolonged power outages may occur while you are gone.
11. The door to the evaporator clearance can be used to store food.
12. The storage time(s) recommended by the food manufacturers for any kind of food and particularly for commercially quick-frozen food in food-freezer and frozen-food storage compartments or cabinets.
13. The precautions necessary to prevent an undue rise in the temperature of the frozen food while defrosting the refrigerating appliance, such as wrapping the frozen food in several layers of newspaper.
14. The care required with regards to frozen food in storage in the event of an extended non-running of the refrigerating appliance (interruption of power supply or failure of the refrigerating system).

Maintenance and cleaning

1. Internal cleaning

Clean the Refrigerator internally with a weak solution of bicarbonate of soda. Then rinse with warm water using a damp sponge or cloth and wipe dry. Wash the baskets in warm soapy water and ensure they are completely dry before replacing in the Refrigerator.

2. External cleaning

Use standard non-abrasive detergent diluted in warm water to clean the Refrigerator exterior.

The grille of the condenser at the back of the Refrigerator and the adjacent components can be vacuumed using a soft brush attachment.

Do not use harsh cleaners, scouring pads or solvents to clean any part of the Refrigerator

ELECTRICAL INFORMATION

THIS APPLIANCE MUST BE EARTHED.

This appliance is fitted with a plug which will be suitable for use in all houses fitted with sockets to current specifications.

If the fitted plug is not suitable for your socket outlets, it should be cut off and carefully disposed of. To avoid a possible shock hazard, do not insert the discarded plug into a socket.

Servicing

Simple fault analysis and elimination

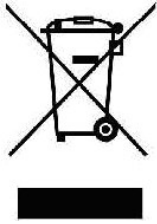
Not every failure requires technical service personnel to solve the following simple small problem; you can try to solve the problem.

Case	Inspection	Solutions
<ul style="list-style-type: none"> • Completely non refrigeration 	<ul style="list-style-type: none"> • Is power plug off? • Are breakers and fuses a broken? • No electricity or line trip? 	<ul style="list-style-type: none"> • Re-plug. • Opening the door and checking whether the lamp is lit.
<ul style="list-style-type: none"> • Abnormal noise 	<ul style="list-style-type: none"> • Is refrigerator stable? • Does refrigerator reach the wall? 	<ul style="list-style-type: none"> • Adjusting refrigerator's adjustable feet. • Off the wall.
<ul style="list-style-type: none"> • Poor refrigerating efficiency 	<ul style="list-style-type: none"> • Do you put hot food or too much food? • Do you open the door frequently? • Do you clip food bag to the seal of door? • Direct sunlight or near a furnace or stove? • Is it well-ventilated? • Temperature setting in too high? 	<ul style="list-style-type: none"> • Putting food into refrigerator when hot food becomes cool. • Checking and closing the door. • Removing the refrigerator from the heat source. • Emptying the distance to maintain good ventilation. • Setting to the appropriate temperature.
<ul style="list-style-type: none"> • Peculiar smell in refrigerator 	<ul style="list-style-type: none"> • Any spoiled food? • Do you need to clean refrigerator? • Have you packed food of strong flavors? 	<ul style="list-style-type: none"> • Throwing away spoiled food. • Cleaning refrigerator. • Packing food of strong flavors.

Note: If the above description can't be troubleshooting, do not disassemble the repair yourself. Repairs carried out by inexperienced persons may cause injury or serious malfunctioning. Contact the local store where your purchase was made. This product should be serviced by an authorized engineer and only genuine spare parts should be used.

When the appliance is not in use for long periods, disconnect from the electricity supply, empty all foods and clean the appliance, leaving the door ajar to prevent unpleasant smells.

Correct disposal of this product



From 31 December 2018, the disposal licensing control, import and export permit control and landfill disposal ban in respect of abandoned regulated electrical equipment (REE) have commenced. Any person who is engaged in the storage, treatment, reprocessing or recycling of abandoned REE must obtain a waste disposal licence; a permit is required for the import and export of abandoned REE; and abandoned REE is no longer be accepted for disposal at the landfills and other designated waste disposal facilities (e.g. refuse transfer stations).